



SAFE TOOLS FOR DANGEROUS AREAS NO SPARKS, JUST PERFORMANCE

EN

ATEX IMPACT WRENCHES

SAFE TOOLS FOR DANGEROUS AREAS

No Sparks, Just Performance



SAFETY HAS NEVER FELT THIS STRONG



Unleash Power and Safety in Explosive Zones

Discover the new Red Rooster ATEX Impact Wrenches, engineered for those who work where safety is non-negotiable. Whether you're in the oil & gas industry or a chemical plant, these tools are your go-to for powerful, reliable performance in explosive environments. With the trusted ATEX classification EX II 3G IIB T4 / EX II 3D IIB 135°C, you're equipped to tackle

the toughest jobs with total confidence. At the heart of this series is the revolutionary Mechoneer impact mechanism, built for extreme durability while dramatically reducing vibrations and noise. That means less fatigue, more comfort and maximum control.

Combined with high breakaway torque, these wrenches deliver the muscle and precision you need to keep your operations running smoothly.

Your All-in-One Safety Solution

Pair your Red Rooster Impact Wrench with our ATEX Impact Sockets and unlock the full potential of your setup. This powerful combo doesn't just meet safety standards, it raises them. Reduce risks, increase efficiency, and keep your team protected while performing at their best.

Type	Square drive	Version	Bolt capacity mm	Impact mechanism	RPM	Torque Nm	Breakloose torque Nm	Power adjust.	Air cons. l/s	Weight kg	Inlet thread	Hose diameter mm
RRI-1400M-EX	1/2"	R	14	Mechoneer	9000	470	1200	R 2 Pos	8,5	1,3	PT 1/4"	6,5
RRI-2100M-EX	1/2"	R	20	Mechoneer	7500	1000	1850	L/R 2 Pos	12	2,0	PT 1/4"	10
RRI-2500M-EX	3/4"	R+H	24	Mechoneer	5500	2000	2700	L/R 2 Pos	16	3,5	PT 1/4"	13
RRI-3700M-EX	1"	R+H	36	Mechoneer	4300	2300	3120	L/R 3 Pos	20	6,8	PT 1/2"	13
RRI-3700ML-EX	1"	R+H	36	Mechoneer	6000	2700	3390	L/R 3 Pos	20	9,2	PT 1/2"	13

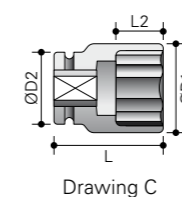
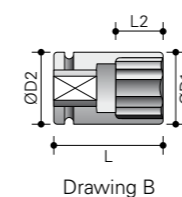
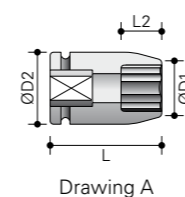


Spark proof impact sockets

The ATEX Impact Sockets are made of aluminum bronze, which is shock-resistant and wear-resistant and of course also provides the possibility to work in an ATEX environment.

SPARK PROOF IMPACT SOCKETS 1/2"

Type	mm	Drawing	D1 mm	D2 mm	L mm	L2 mm
D02012-0-013-EX	13	A	21,5	25	40	8
D02012-0-014-EX	14	A	22,5	25	40	10
D02012-0-015-EX	15	A	24	30	40	10
D02012-0-016-EX	16	A	25	30	40	10
D02012-0-017-EX	17	A	26,5	30	40	10
D02012-0-018-EX	18	A	27,5	30	40	12
D02012-0-019-EX	19	A	29	30	40	12
D02012-0-020-EX	20	B	30	30	40	12
D02012-0-021-EX	21	C	31,5	30	40	14
D02012-0-022-EX	22	C	32,5	30	40	14
D02012-0-023-EX	23	C	34	30	40	14
D02012-0-024-EX	24	C	35	30	45	16
D02012-0-025-EX	25	C	36,5	30	45	16
D02012-0-026-EX	26	C	37,5	30	45	16
D02012-0-027-EX	27	C	39	30	48	18
D02012-0-028-EX	28	C	40	30	48	18
D02012-0-029-EX	29	C	41,5	30	48	18
D02012-0-030-EX	30	C	42,5	30	48	20
D02012-0-032-EX	32	C	45	30	50	22



SPARK PROOF IMPACT SOCKETS 1"

Type	mm	Drawing	D1 mm	D2 mm	L mm	L2 mm
D04010-0-024-EX	24	A	42,5	54	60	16
D04010-0-027-EX	27	A	46,5	54	60	18
D04010-0-030-EX	30	A	50	54	62	20
D04010-0-032-EX	32	A	52,5	54	63	22
D04010-0-033-EX	33	B	54	54	63	22
D04010-0-034-EX	34	C	55	54	63	22
D04010-0-036-EX	36	C	57,5	54	67	24
D04010-0-038-EX	38	C	60	54	67	24
D04010-0-041-EX	41	C	64	54	70	27
D04010-0-046-EX	46	C	70	54	76	30
D04010-0-050-EX	50	C	75	54	82	33
D04010-0-055-EX	55	C	81,5	54	87	36
D04010-0-060-EX	60	C	87,5	54	91	39
D04010-0-065-EX	65	C	94	54	95	39
D04010-0-070-EX	70	C	100	54	100	40

RET RING

Type	Square Drive	Ød1 mm	D2 mm	L1 mm
DOESR-2	3/4"	4,8	41 ~ 57	32
DOESR-3	1"	5,4	44 ~ 67	36



SAFE TOOLS FOR DANGEROUS AREAS

No Sparks, Just Performance

ATMOSPHÈRES EXPLOSIBLES

ATEX comes from the French words "ATmosphères EXplosibles" which is the name commonly given to the two European Directives for controlling explosive atmospheres. The aim of the directive 2014/34/EU is to allow free trade of ATEX equipment within the EU. Some other parts of the world do not have regulations on non electrical equipment in explosive areas and have also adopted the ATEX directive.

- Directive 2014/34/EU (ATEX 95) is for the manufacturers of equipment used in explosive atmospheres
- Directive 99/92/EC (ATEX 137) is for the health and safety protection of workers an manufacturers of installations within a potentially explosive atmosphere.

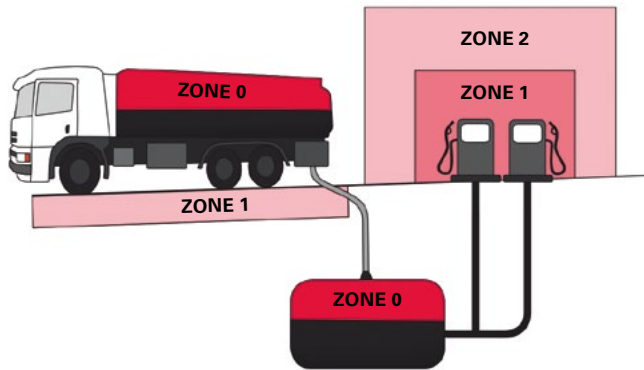
Category	Gas	Dust
Category 1 = zone	0	20
Category 2 = zone	1	21
Category 3 = zone	2	22

The above diagrams are simple examples of explosive atmospheres within industry. Each site may differ.

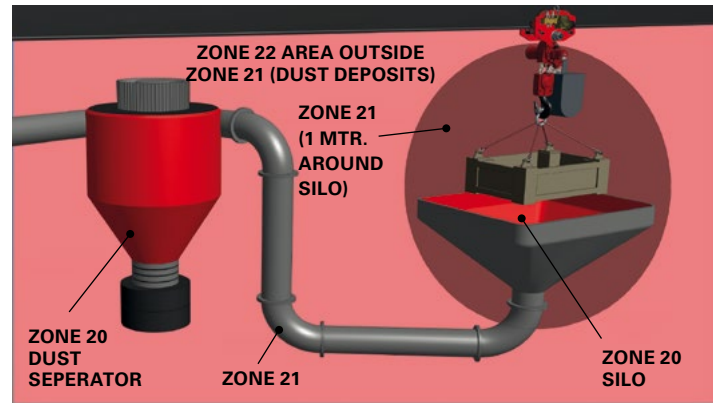
EXPLOSION ZONE CLASSIFICATION

Category	(Formerly known as risk zone)	Description
1G	ZONE 0 (Gas/vapours)	An area in which an explosive mixture is continuously present or present for long periods.
2G	ZONE 1 (Gas/vapours)	An area in which an explosive mixture is likely to occur in normal operation.
3G	ZONE 2 (Gas/vapours)	An area in which an explosive mixture is not likely to occur in normal operation and if it occurs it will exist only for a short time.
1D	ZONE 20 (Dust)	An area in which an explosive mixture is continuously present or present for long periods
2D	ZONE 21 (Dust)	An area in which an explosive mixture is likely to occur in normal operation.
3D	ZONE 22 (Dust)	An area in which an explosive mixture is not likely to occur in normal operation and if it occurs it will exist only for a short time.

HAZARDOUS AREAS | GAS ATMOSPHERES



DUST ATMOSPHERE



Rami Yokota BV

De Ruyterkade 120
1011 AB Amsterdam

+31 20 531 8805
sales@rami-yokota.com
www.rami-yokota.com



INDUSTRY PARTS LIMBURG

Gerard Mercatorstraat 28
B-3920 Lommel

INFO@IPLGROUP.BE
011.54.44.87



Red Rooster ATEX
Impact Wrenches

